

# SMWA avs

50-90 HP Ø max. 5 cm [2 inch]

## Manoeuvrable flail mulcher for offsetting operations

The Seppi **SMWA avs** is an offsetting mulcher that demonstrates the height of its potential above all on steep terrain.

The rear attached tractor is able to reach even the steepest slopes.

The side shift feature and ample space for up and down movements makes the Seppi **SMWA avs** a particularly manageable mulcher.

Even in the tightest work spaces, it is still lightweight and easy to handle, making it especially suited to orchards and vineyards. The larger versions on the other hand are ideal for landscaping and public sector maintenance works.

## Standard version and characteristics

- > Mulches grass and brush up to 5 cm [2"] Ø
- > Working speed 1-5 km/h
- > 3 point linkage cat. 2
- > 540 rpm gearbox with freewheel
- > Belt transmission
- > Hydraulic side shift
- > Hydraulic inclination
- > Floating system
- > Adjustable support roller
- > Adjustable rear hood with rubber protection M-FLAP
- > Front protection with metal flaps
- > Triple helical rotor with flails
- > 2 rows of tempered counter cutters

## Optional configuration and accessories

- > Rotor with Y flails
- > PTO drive shaft with double wide angle
- > 750 rpm gearbox
- > External transmission (only 175+200)
- > Front attachment
- > Safety breakaway FLEX-SAFE (only rear attachment)
- > Reinforced belt protection
- > Belt cover on the right for working on the left
- > Roller scraper
- > Lateral support rollers 160 mm [6 inch] Ø
- > Front protection with chains
- > Additional front rubber flap

## Required hydraulic fittings

1 double & 1 single acting



YouTube [www.youtube.com/seppimulcher](http://www.youtube.com/seppimulcher)

## Specifications • SMWA avs

Working width	cm [inch]	<b>155 [61]</b>	<b>175 [69]</b>	<b>200 [79]</b>
Overall width	cm [inch]	167 [66]	190 [75]	215 [85]
Depth · transport	cm [inch]	170 [67]	190 [75]	190 [75]
Height	cm [inch]	105 [41]	105 [41]	105 [41]
Weight · base value	kg [lbs]	600 [1,320]	650 [1,430]	695 [1,530]
Belts	qty	3	4	4
Flails	qty	15	18	21
Y flails	qty	27	33	39
Tractor weight	kg	1.930 [4,255]	2.250 [4,960]	2.350 [5,180]
Nominal Power	HP	50-65	60-90	70-90

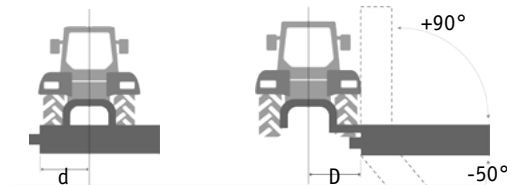
## Tools



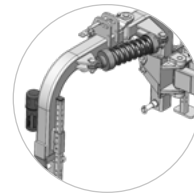
### SMWA avs · features

Robust chassis made of high tensile steel.

S420



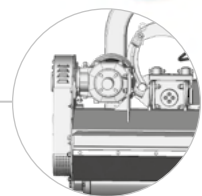
Hydraulic side shift  
 D= up to 84 cm [33 inch]  
 with optional external gear up to 136 cm [54 inch]  
 d= 68 cm [27 inch]  
 or 42 cm [17 inch] with external gear  
 The boom can be angled 90 ° upwards  
 and tilted 50 ° downwards



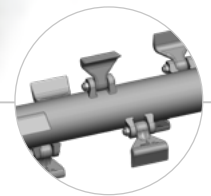
Safety breakaway to prevent  
 breakage of the linkage.  
 Articulated attachment frame  
 allows dynamic flexation (option)  
**FLEX-SAFE**



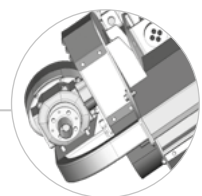
Two floating positions  
 - Vertical floating up/down  
 - Floating of the mulching head (tilt)  
**FLOAT**



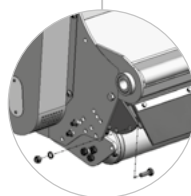
Gearbox inside machine keeps  
 the mower close to the tractor  
 (appropriate e.g. for orchard rows)



Standard rotor  
 with SMW flails



External gearbox  
 allows large outrigging  
 (option for 175-200 cm)



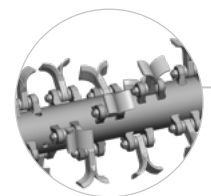
Adjustable hood  
 to set the degree of  
 mulching

**M-FLAP**



Tempered counter  
 cutters for a perfect  
 mulching result

**2 COUNTER CUTTERS**



Optional rotor  
 with Y flails

**HELIX ROTOR**