

S9 multipla

100-250 HP

Ø max. 9 cm [3.5"]

Powerful large area mulcher for up to 8 meters [26 feet] working width

This multipla combines 3 powerful S9 mulchers that are not only used on large lawns such as golf courses and airports, but also prove their skills in stubble fields shredding demanding material quickly and extensively. It mulches grass and prunings up to 9 cm (3.5 inches) and reaches working widths up to 8 meters (26 feet).

The S9 multipla is available in 4 configurations. With the trailer hitch of the standard version the mulchers are pulled forward. The optional variations are rear mounted to a 3 point linkage, one model is designed for moving forward and the other one prepared for a pushed machine is moving in reserve. In all cases the central mulcher **S9 base** can be used independently, also in front of the tractor. Another version with 3-point linkage has two machines and can be used in combination with a front mulcher.

The mulchers adapt to the terrain during the journey and can be lifted simultaneously via the hydraulic remote control.

Standard version and characteristics

- > Mulches grass and brush up to 9 cm [3.5 inches] Ø
- > Working speed 3-10 km/h
- > **Configuration C1: Trailer hitch** with two lateral mowers and the central S9 base, with 2 wheels, mud guards and hydraulic parking stand
- > 1000 rpm gearbox
- > Belt transmission
- > Hydraulic system
- > Tristop pneumatic brake system
- > Automatic greasing system
- > Adjustable rear hood with rubber protection
- > Front protection with chains
- > Support roller 193 mm Ø
- > Rear lamp kit and chevrons
- > Rotor with SMO flails

Optional configuration and accessories

- > **Configuration C2:**
3 point linkage - 3 mulcher forward drive
- > **Configuration C3:**
3 point linkage - 3 mulcher reserve drive/push
- > **Configuration C4:**
3 point linkage - 2 mulcher forward drive
- > PTO drive shaft with wide angle (compatible with C1)
- > PTO drive shaft (compatible with C2,C3,C4)
- > Roller scraper



YouTube www.youtube.com/seppimulcher

Tools



Flail
SMO

Specifications · S9 multipla		Standard - C1	C2	C3	C4
Working width	cm [inch]	800 [315]	800 [315]	800 [315]	800 [315]
Overall width	cm [inch]	805 [317]	805 [317]	805 [317]	805 [317]
Transport width	cm [inch]	295 [116]	295 [116]	295 [116]	295 [116]
Depth	cm [inch]	495 [195]	290 [114]	290 [114]	162 [64]
Transport depth	cm [inch]	395 [156]	395 [156]	395 [156]	395 [156]
Weight · base value	kg [lb]	4.950 [10,910]	4.500 [9,920]	4.500 [9,920]	3.400 [7,500]
Belts	qty	3 x 5	3 x 5	3 x 5	2 x 5
SMO flails	qty	87	87	87	60
Nominal tractor power	HP	100-250	100-250	100-250	100-250

S9 multipla · features

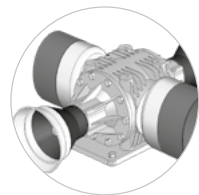
Strong and robust casing made of high-tensile steel, with replaceable wear plates.



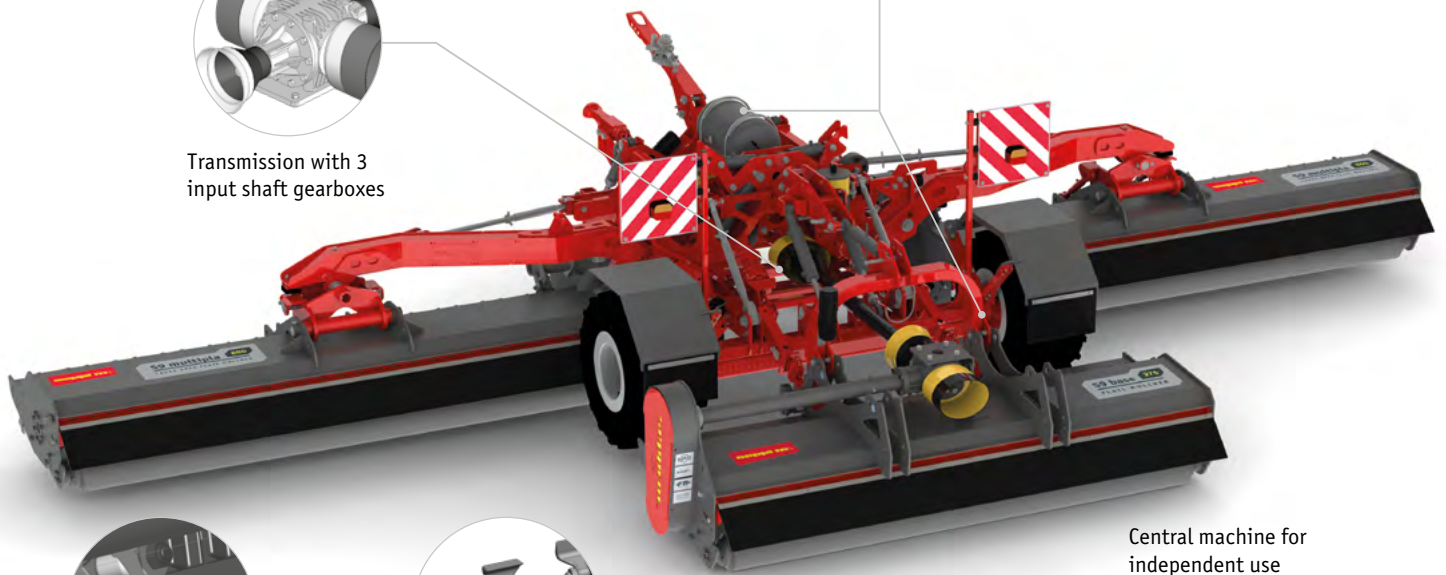
Functions of the hydraulic system:

- Lifting of mulchers including safety hooks
 - Lift limiter for a fast turnaround
 - Towed version C1 with hydraulic parking stand
- 1 single and 1 double acting connection required

TRISTOP break system enable service, parking and emergency brake functions



Transmission with 3 input shaft gearboxes

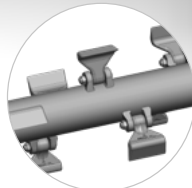


Central machine for independent use



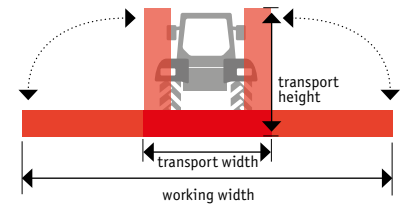
2 COUNTER CUTTERS

Replaceable tempered counter cutters inside the casing provide a perfect result when mulching.

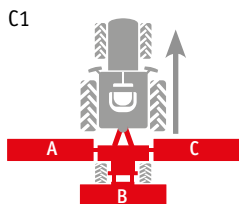


HELIX ROTOR

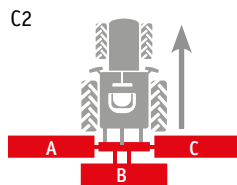
Rotor with SMO flails
Low power consumption at maximum throughput with helix rotor technology



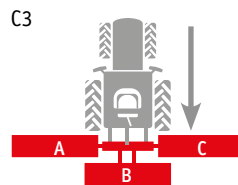
4 Configurations - assembly combinations



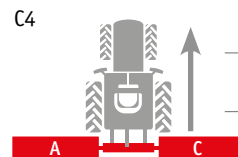
Trailer hitch with 3 machines forward drive



3 point linkage with 3 machines forward drive



3 point linkage with 3 machines reverse drive - push



3 point linkage with 2 machines forward drive

A	B	C
300 cm	275 cm	300 cm
[118"]	[108"]	[118"]