

# S7 base

50-160 HP Ø max. 7 cm [2.8 inch]

## The expert among the medium-power mulchers with reversible linkage

Roadsides, lawns and fields: This innovative mulcher meets the needs of professional green space maintenance operators in various situations. Both the hammers and counter cutters are made of tempered steel for easy mulching of grass, branches and prunings with a diameter of up to 7 cm. For an always clean cut, the hammers, and even the counter cutters, can be replaced if necessary. The inside of the chassis is fitted with interchangeable wear-plates, suitable for even the most heavy-duty tasks. The mulcher is very robust and at the same time very lightweight, which is a particular advantage when working on slopes, where the heavy weight of the mulcher can affect the stability of the vehicle. The **S7 base** is reversible and can be driven in front or rear.

## Standard version and characteristics

- > Mulches grass and brush up to 7 cm [2.8"] Ø
- > Working speed 3-10 km/h
- > 3 point linkage cat. 2 reversible
- > 1000 rpm gearbox with freewheel and through shaft
- > Belt transmission
- > Front protection with metal flaps and chains
- > Support roller, adjustable in height
- > Standard rotor with flails ≤200: SMO, ≥225: SMW
- > 2 rows of replaceable tempered counter cutters

## Optional configuration and accessories

- > Rotor with Y flails
- > 540 rpm gearbox
- > Gearbox with automatic inverter and double freewheel
- > Additional 3-point linkage
- > Front attachment
- > Front protection with chains & chains
- > Rubber wheels instead of roller
- > Adjustable rear hood M-FLAP
- > Hydraulic adjustable rear hood
- > Attachments for undercanopy maintenance (details see separate brochure)



YouTube [www.youtube.com/seppimulcher](http://www.youtube.com/seppimulcher)

### Tools

SMO

SMW

flails



Y knives



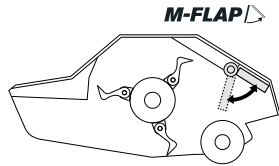
## Specifications · S7 base

|                       |           | 150 [59]    | 175 [69]    | 200 [79]    | 225 [89]    | 250 [98]    |
|-----------------------|-----------|-------------|-------------|-------------|-------------|-------------|
| Working width         | cm [inch] | 150 [59]    | 175 [69]    | 200 [79]    | 225 [89]    | 250 [98]    |
| Overall width         | cm [inch] | 166 [65]    | 191 [75]    | 216 [85]    | 241 [95]    | 266 [104]   |
| Depth                 | cm [inch] | 115 [45]    | 115 [45]    | 115 [45]    | 115 [45]    | 115 [45]    |
| Height                | cm [inch] | 115 [45]    | 115 [45]    | 115 [45]    | 115 [45]    | 115 [45]    |
| Weight (base value)   | kg [lb]   | 530 [1,170] | 610 [1,340] | 650 [1,430] | 720 [1,590] | 780 [1,720] |
| Belts                 | qty       | 4           | 4           | 4           | 4           | 4           |
| Flails                | qty       | SMO 15      | SMO 18      | SMO 21      | SMW 24      | SMW 27      |
| Y flails              | qty       | 27          | 33          | 39          | 45          | x           |
| Nominal tractor power | HP        | 50-100      | 50-100      | 50-100      | 90-160      | 90-160      |

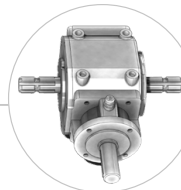
### S7 base · Features

Strong and robust chassis made of high-tensile steel, with replaceable wear plates.

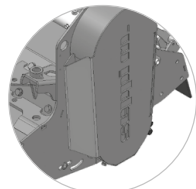
S420



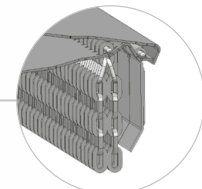
Optional: adjustable hood under the rear chassis to set the degree of mulching, mechanical or hydraulic version



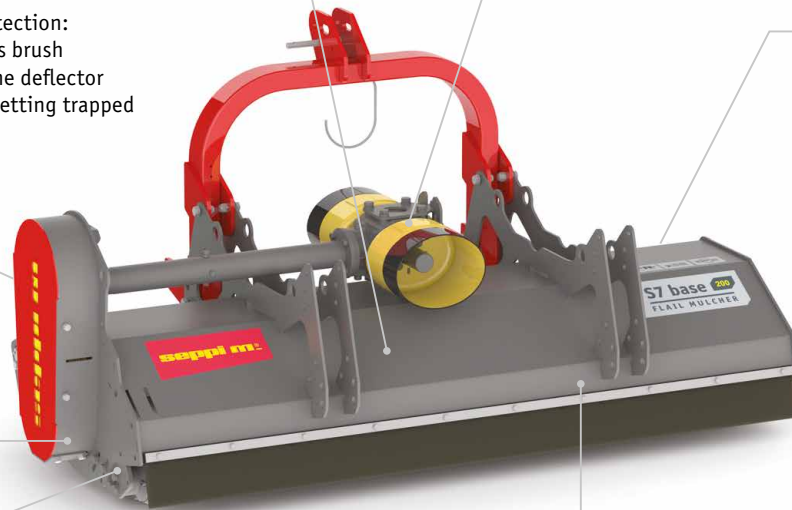
Gearbox for front and rear attachment



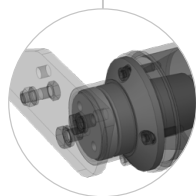
Plant protection: The plants brush against the deflector without getting trapped



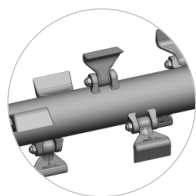
Combined protection: The flaps tilt and move the chains, creating a barrier that prevents the material from getting jammed inside the chains; the chains protect against stone ejection



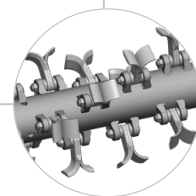
Belt Protections: Robust version, corresponds to the forestry machine design



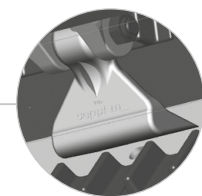
Adjustable support roller, Reinforced bearing and roller



Standard rotor with SMW/SMO flails



Optional rotor with Y flails



Replaceable tempered counter cutters inside the chassis provide a perfect result when mulching.



Low power consumption at maximum throughput with HELIX ROTOR technology

