

# MINISOIL cl

150-380 bar | 105-250 l/min

## Stone crusher and forestry tiller for compact loaders

MINISOIL cl is a multifunctional forestry tiller specially designed for skid steer loaders, based on their dimensions and reduced weights. It is a unique attachment, capable of both mulching wood and crushing stones, working the soil in depth.

The double-sided belt drive ensures high torque, which is essential for this kind of work. The Carbonchain belts used here are particularly reliable and durable. Several rows of crushing bars on which the material is grinded in the rotor housing ensure an optimum crushing result before it is discharged.

### Standard version and specifications

- > Crushes stones up to 15 cm [6"] Ø  
Mulches wood up to 20 cm [8"] Ø  
Tills the soil as deep as 10 cm [4"]
- > Working speed 0-2 km/h
- > Chassis made of high tensile and wear-resistant steel AR400 with internal replaceable WEARPLATES
- > SAE skid steer attachment interface
- > Dual sided CARBONCHAIN gear belt drive
- > Transmission with 2 automatic variable displacement motors M-BOOST 60-80 cm<sup>3</sup>
- > Pressure gauge
- > Skids for material feeding
- > Rotor with tungsten CARBIDE inserts hammers SUPER DUO PROTECT + lateral EXTREME; anti-wear hammer support
- > 3 crushing bars AR400 and 1 adjustable anvil bar


### Optional configuration and accessories

- > Rotor with SUPER MONO PROTECT
- > 1/2" polycarbonate impact resistant shield for loader.  
Replaces original glass shield.

### Fields of application

- > Road rehabilitation
- > Cleanup after construction work
- > Soil stabilization
- > Easy construction site clearance
- > Breaking stones in fields



 [www.youtube.com/seppimulcher](https://www.youtube.com/seppimulcher)

Specifications • MINISOIL cl		
Working width	cm [inch]	150 cm [59"]
Overall width	cm [inch]	170 cm [67"]
Depth	cm [inch]	121 cm [48"]
Height	cm [inch]	77 cm [30"]
Weight (base value w/o options)	kg [lb]	1.160 kg [2,560 lb]
Fixed hammers SUPER DUO PROTECT standard	qty	2 + 26 + 2
Fixed hammers SUPER MONO PROTECT option	qty	2 + 26 + 2

### TOOLS



## High-performance hydraulic drive



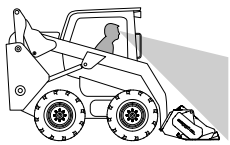
**MINISOIL cl** is a powerful machine with small dimensions for hydraulic vehicles with a capacity of 105-250 l/min [28-66 gpm]. The automatic adaptability of the engines is important for work in different conditions.

M-BOOST motors comes further with many advantages:

- the torque varies automatically according to the load
- up to 40% more torque
- the mulcher rotor gains speed much faster
- reduced work times
- easy control, without electronics

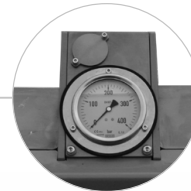
### HYDRAULIC DRIVE

Pressure	150-380 bar [2,175 - 5,500 psi]
Required hydraulic flow	105-250 l/min [28 - 66 gpm]
Required hydraulic hoses	3 (pressure, return, drainage)
Case drain pressure	max. 1.5 bar



**LOW PROFILE**

for an optimal field of vision from cab to track



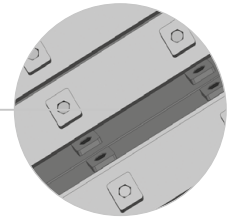
Pressure gauge



MINISOIL cl

**AR400**

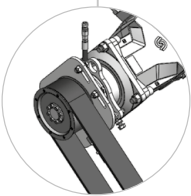
**WEARPLATE**



Chassis made of high tensile and wear-resistant steel with replaceable wear plates

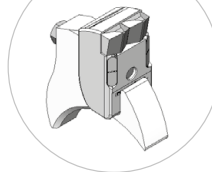
Skids for material feeding

**CARBONCHAIN**



CARBONCHAIN belts provide high strength and length stability with high flexibility

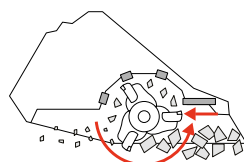
**CARBIDE**



Wear resistant hammers with tungsten carbide inserts

- due to a special composition of the tungsten carbide the inserts are extremely hard and highly wear resistant.
- tempered counter knives for a perfect mulching result

**Safety Note:**  
MINISOIL cl may be raised to a maximum of 50 cm [20 inch] and should be only used with stone impact protected cabins.



The adjustable anvil bar and 3 rows of crushing bars adjust the degree of mulching